

# LITTLE MOVERS



Brought To You By  
Science Centre Singapore

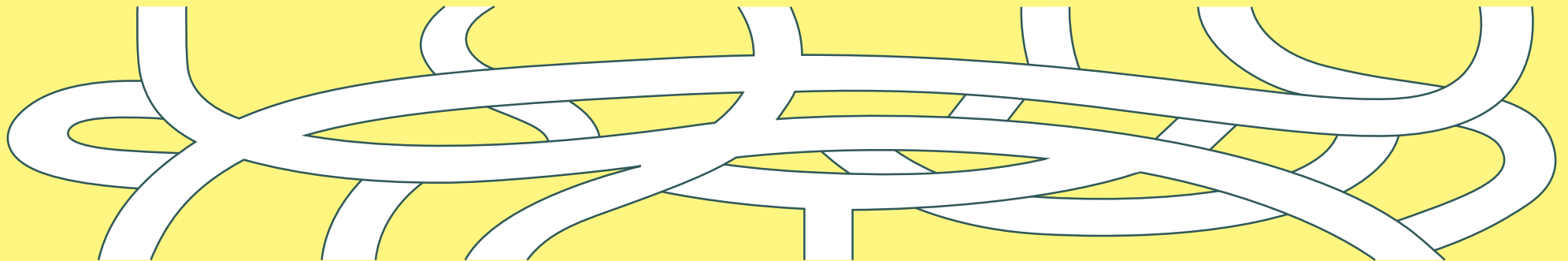


Name:

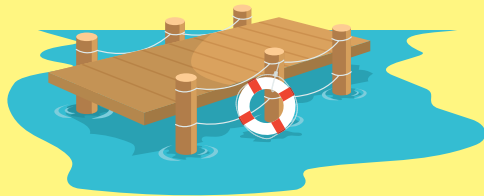


Brought To You By  
Science Centre Singapore

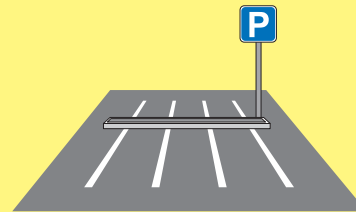
# WHERE CAN THE AEROPLANE, SHIP AND CAR STOP SAFELY?



Harbour



Carpark

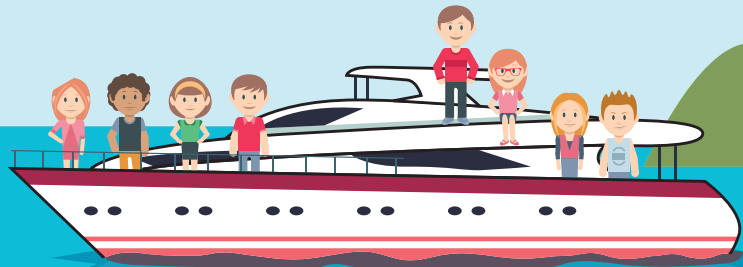


Airport





Brought To You By  
Science Centre Singapore

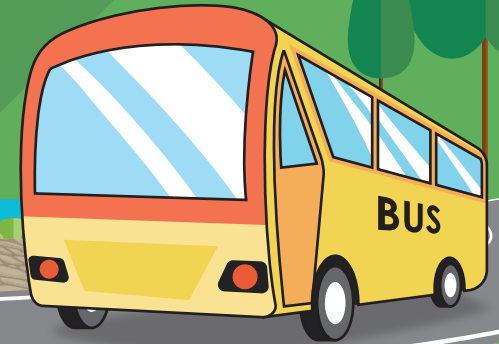


## ON LAND

What do the bicycle, the car, and the bus have in common?

Answer: W H  L S

Before different types of transportation were invented, people had to walk and carry heavy things around. Now, we can do work more easily.



## ON WATER

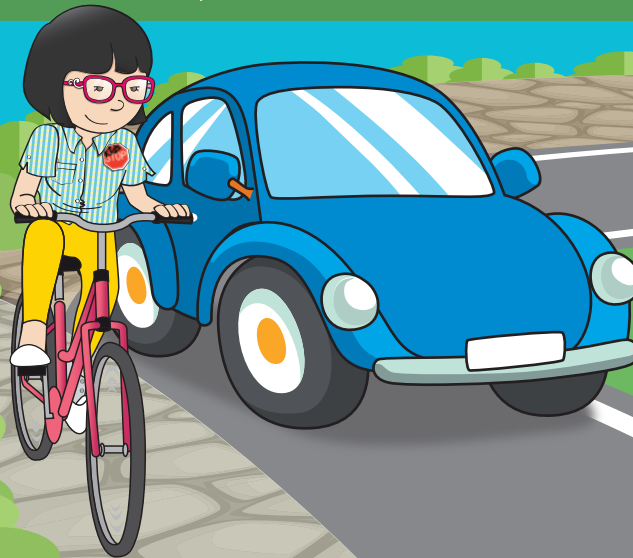
How does a ship float on water?

On the sea, a ship pushes water out of the way to make room for itself. A ship may be heavy, but when it pushes more water than its weight, then it can float. This is also known as displacement of water.

If there are too many people, a ship will become heavier and sink.

Can you count how many people this ship is carrying?

Answer:



Take a look at the wheels that you can find around you. Can you find any at the Kiddie Theatre? Tick which wheel is more commonly found. Do you know why?



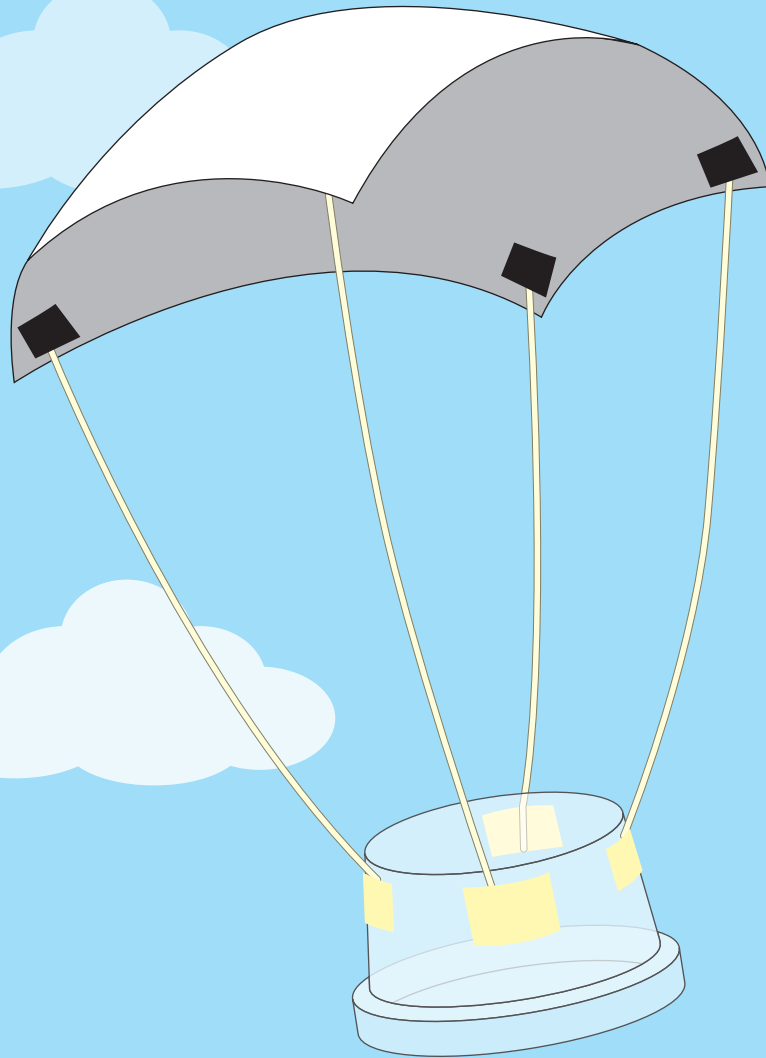
The wheel with patterns are more commonly found! The patterns help vehicles to provide grip on roads so that they will not skid.

# PARENT'S CORNER

Try this at home with your children!



Brought To You By  
Science Centre Singapore



Explore gravity and different material properties with your child! Make a parachute which can stay afloat in the air for as long as possible!

## Did you know?

- Parachutes are used to slow down objects that are moving through the air.
- They help to protect people from getting hurt when they fall from high places.

Bring your own parachute the next time you visit KidsSTOP™ again and test it out at the wind tunnel! Guide your child to experiment with different parachute designs.

## Some questions to ask:

Is the parachute too heavy? How can we make it lighter? How do different materials and shapes of the parachute affect the way it floats?