

NATURE EXPLORER



Brought To You By
Science Centre Singapore



Name: _____

SEASONS



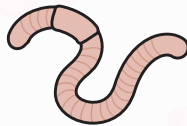
Brought To You By
Science Centre Singapore

SPRING

Spring is here! There is more sunlight, and new plants start to grow!

Many animals have their babies at this time because they can find lots of food to feed their young.

Can you help these animals find their food?

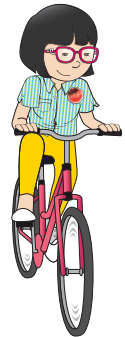


SUMMER

Let's build some sandcastles!

Summer is the hottest time of the year when most animals come out to play, and most trees start to bear fruits.

Circle the activities that you can do in summer.



SEASONS



Brought To You By
Science Centre Singapore

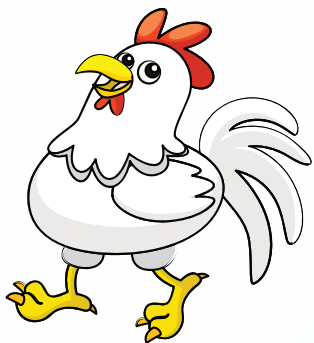
WINTER

The days grow short, the nights grow long. It gets really cold when **winter** comes.

How do animals get ready for winter? Some animals move to warmer places, some animals go into a deep sleep until spring begins.

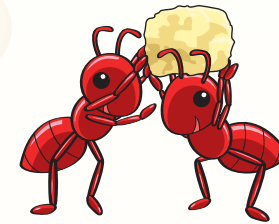
Some animals have a thick outer covering to protect them from the cold.

Circle the bird that has a thick covering to survive through the cold winter.

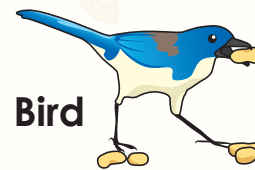


AUTUMN

During **autumn**, the leaves from some trees change colour and start to fall as the weather starts to turn cold.



Ant



Bird



Squirrel

Did you know that these animals gather food in autumn and store them before winter starts?

PARENT'S CORNER

Try this at home with your children!



Brought To You By
Science Centre Singapore

Watch a mealworm grow into an adult beetle

Mealworms are easy to raise and fun to watch! Give your young scientist a chance to observe and

Once they hatch from eggs, the mealworms eat a lot to grow bigger. Thus, they shed their hard outer covering often. When they become a pupa, they do not eat. They take this time to slowly transform into an adult. When they finally turn into an adult, the female lays eggs and the cycle then continues again!

